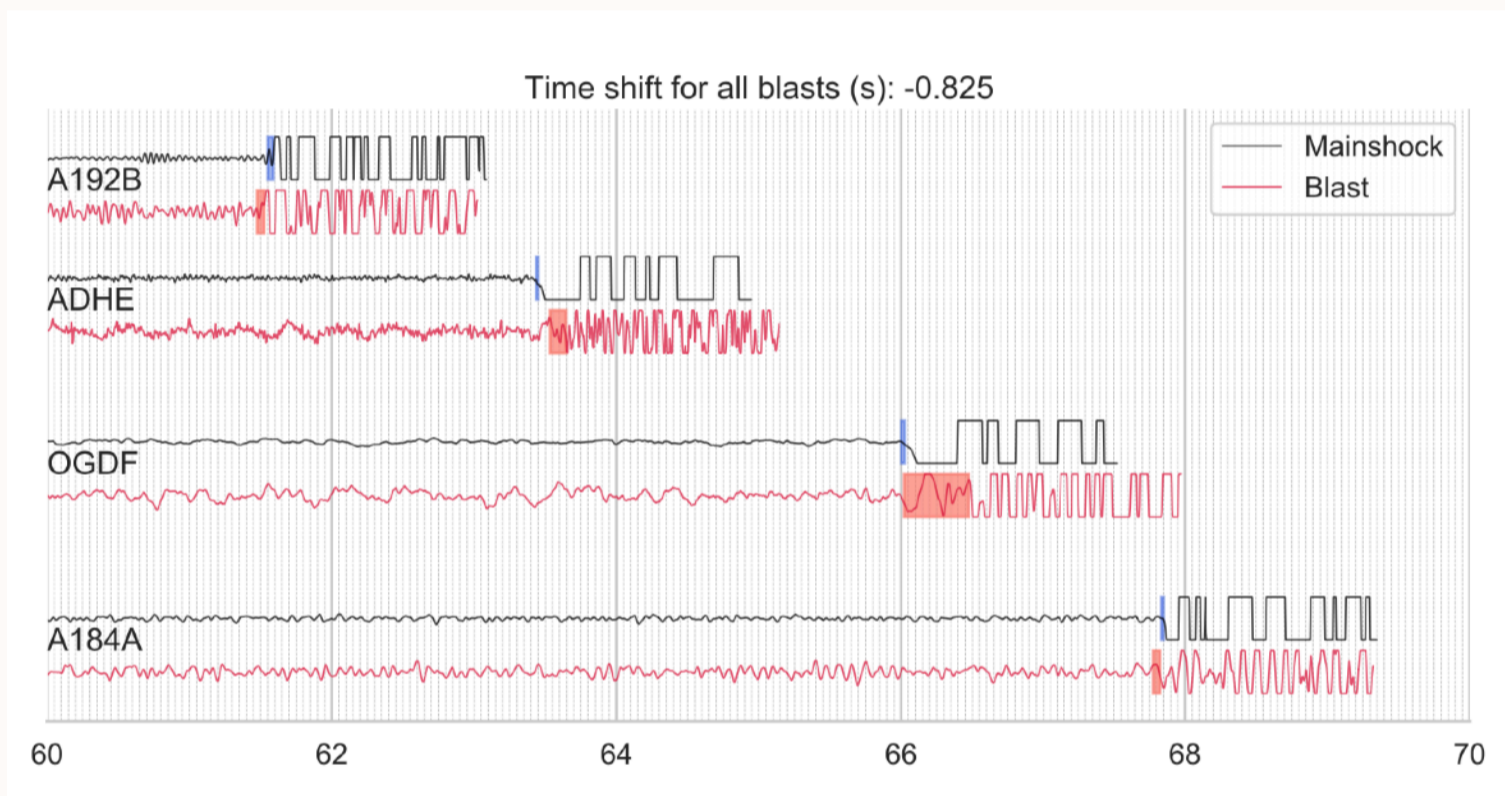


# Locating a triggered (?) earthquake by using blast signals

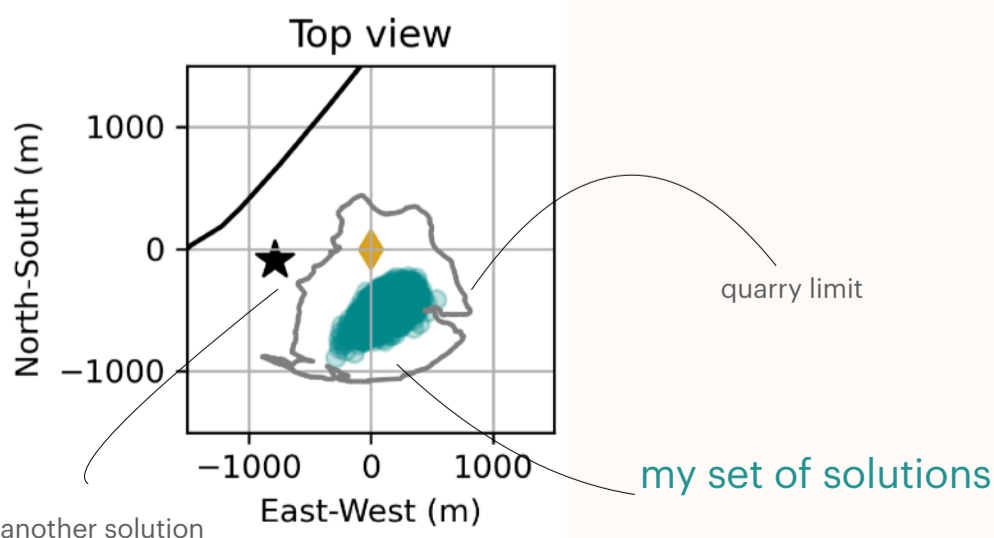
The 2019 Mw 4.9 earthquake in Le Teil (France)

A surprisingly shallow earthquake in the proximity of a quarry

## Picking arrival times: Mainshock vs blast



Idea: If the earthquake was triggered because of quarry blast, mainshock and blast should be comparable



Preliminary results: epicentre in the quarry, supporting the hypothesis of a triggered event

synergistic work with J.P. Ampuero & Equipe Seismes (Géoazur)